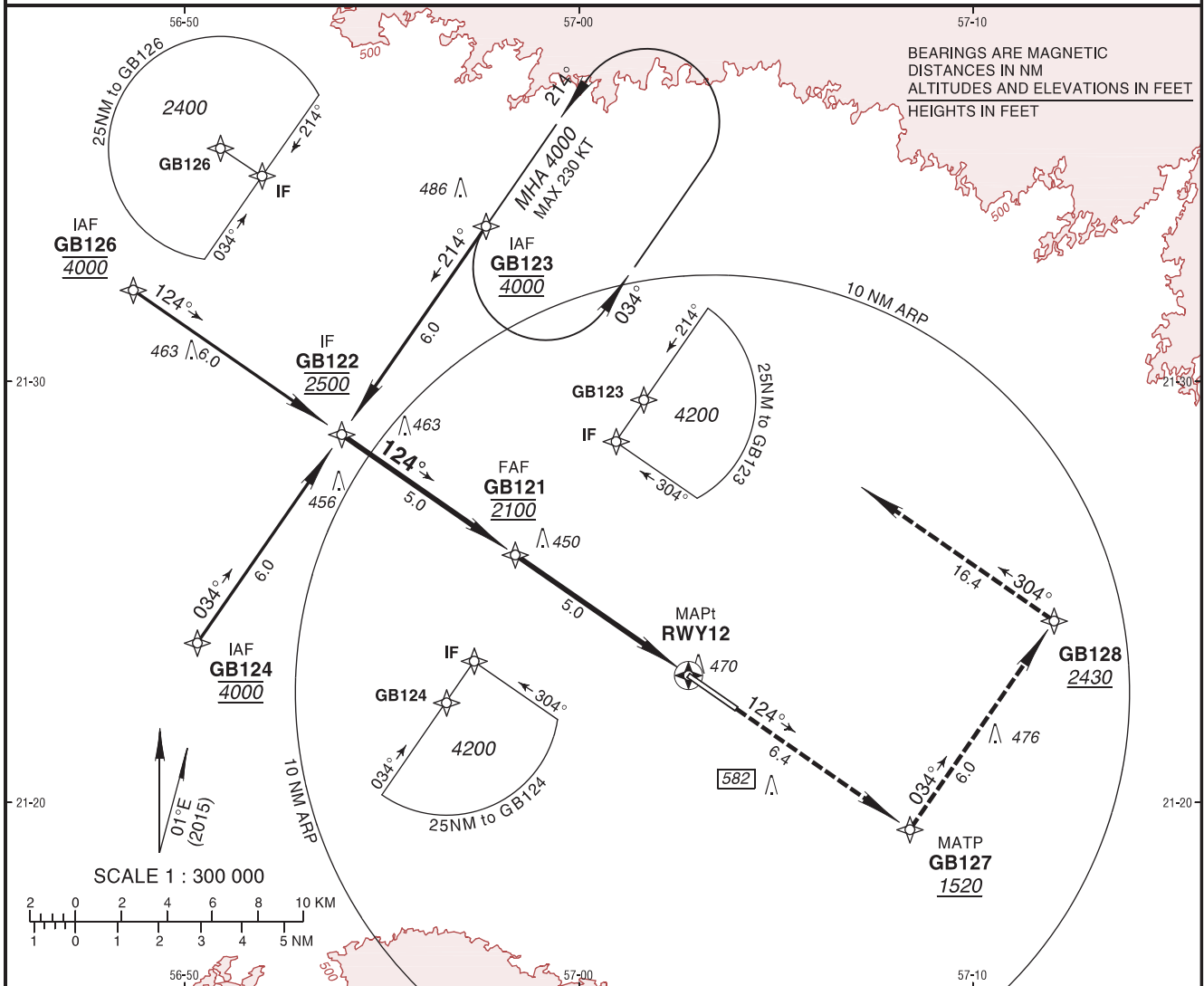


INSTRUMENT
APPROACH
CHART - ICAO

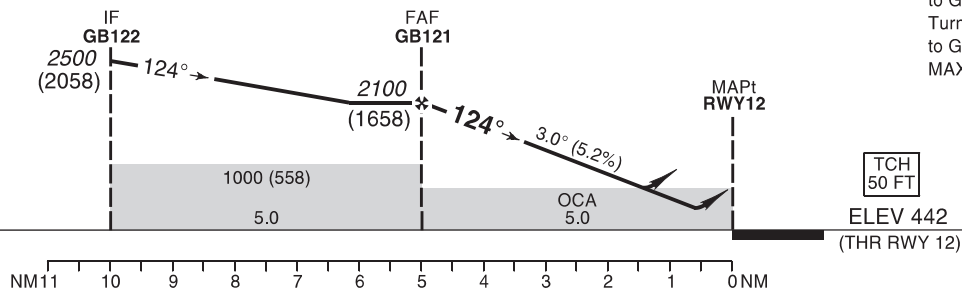
AD ELEV 442 FT
HEIGHTS RELATED TO
THR RWY 12 ELEV 442 FT

QARN ALAM Information 122.750
MUSCAT Control 124.700

QARN ALAM/Qarn Alam
OMAN
RNP RWY 12



TA 13000



MISSED APPROACH:
Climb direct to GB127
at or above 1520. Turn LEFT
to GB128 at or above 2430.
Turn LEFT climbing 4000
to GB123 and hold.
MAX IAS 195 KT until GB123.

STRAIGHT-IN APPROACH		A	B	C	D	ADVISORY INFORMATION ONLY							
LNAV/VNAV	OCH	191			Not Authorized	NM to RWY12	5	4	3	2	1		
	DA(H)	700 (250)				ALT	2100	1770	1450	1130	810		
LNAV	OCH	278			Not Authorized	(HGT)	(1658)	(1328)	(1008)	(688)	(368)		
	MDA(H)	750 (300)				GS	kt	80	100	120	140	160	180
CIRCLING (HAA)*		A	B	C	D	FAF-MAPt	min:s						
	OCH	398	498	598	Not Authorized	ROD: 5.2%	ft/min	440	550	660	770	880	990
	MDA(H)	840 (400)	940 (500)	1040 (600)									

① Timing not authorized for defining the MAPt.
RNP Approach required.
BARO VNAV Not authorized below 5°C or above 50°C.

Holding Instruction/Areas RNP RWY 12

Path descriptor	Fix identifier	Inbound course M (T)	Leg Distance	Turn direction	Minimum altitude	Maximum altitude	Speed	Magnetic variation	Navigation performance
Hold	GB123	214° (214.7°)	1 MIN	L	4000		230 KT	1°E	

Route Description: RNP RWY 12

Path descriptor	Fix identifier	Flyover	Course Magnetic (True)	Turn direction	Altitude	Speed limit	Magnetic variation	Distance	Navigation performance
IF	GB124				@4000		1°E		RNP APCH
TF	GB122		034° (034.7°)		@2500		1°E	6.0	RNP APCH
TF	GB121		124° (124.8°)	R	@2100		1°E	5.0	RNP APCH
TF	<u>RWY12</u>	Y	124° (124.8°)		@492		1°E	5.0	RNP APCH

Path descriptor	Fix identifier	Flyover	Course Magnetic (True)	Turn direction	Altitude	Speed limit	Magnetic variation	Distance	Navigation performance
IF	GB126				@4000		1°E		RNP APCH
TF	GB122		124° (124.7°)		@2500		1°E	6.0	RNP APCH
TF	GB121		124° (124.8°)		@2100		1°E	5.0	RNP APCH
TF	<u>RWY12</u>	Y	124° (124.8°)		@492		1°E	5.0	RNP APCH

Path descriptor	Fix identifier	Flyover	Course Magnetic (True)	Turn direction	Altitude	Speed limit	Magnetic variation	Distance	Navigation performance
IF	GB123				@4000		1°E		RNP APCH
TF	GB122		214° (214.7°)		@2500		1°E	6.0	RNP APCH
TF	GB121		124° (124.8°)	L	@2100		1°E	5.0	RNP APCH
TF	<u>RWY12</u>	Y	124° (124.8°)		@492		1°E	5.0	RNP APCH

Path descriptor	Fix identifier	Flyover	Course Magnetic (True)	Turn direction	Altitude	Speed limit	Magnetic variation	Distance	Navigation performance
MISSED APPROACH									
DF	GB127		124° (124.8°)		+1520	195 KT	1°E	6.38	RNP APCH
TF	GB128		034° (034.7°)	L	+2430	195 KT	1°E	6.00	RNP APCH
TF	GB123		304° (304.8°)	L	@4000	195 KT	1°E	16.37	RNP APCH
HM	<u>GB123</u>	Y	214° (214.7°)	L	+4000	230 KT	1°E		RNP APCH

Aeronautical Data Tabulation: RNP RWY 12

Waypoint / Fix	Latitude	Longitude	Latitude (MIN)	Longitude (MIN)	Notes
GB123 (IAF)	N21°33'41.20"	E056°57'38.54"	N21°33.687'	E056°57.642'	
GB124 (IAF)	N21°23'47.21"	E056°50'18.95"	N21°23.787'	E056°50.316'	
GB126 (IAF)	N21°32'10.01"	E056°48'41.28"	N21°32.167'	E056°48.688'	
GB122 (IF)	N21°28'44.25"	E056°53'58.62"	N21°28.738'	E056°53.977'	
GB121 (FAF)	N21°25'52.65"	E056°58'22.88"	N21°25.878'	E056°58.381'	
RWY12 (MAPT)	N21°23'00.93"	E057°02'46.98"	N21°23.016'	E057°02.783'	
GB127 (MATP)	N21°19'21.56"	E057°08'23.86"	N21°19.359'	E057°08.398'	
GB128	N21°24'18.52"	E057°12'03.55"	N21°24.309'	E057°12.059'	